

Edible Food Recovery

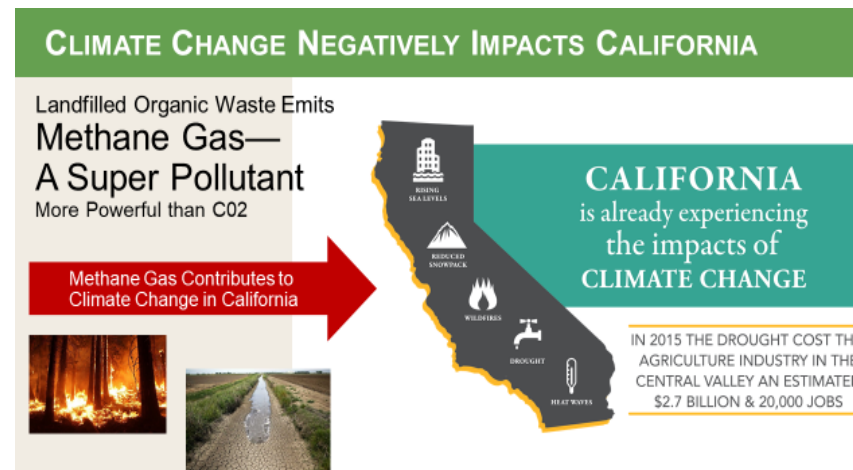
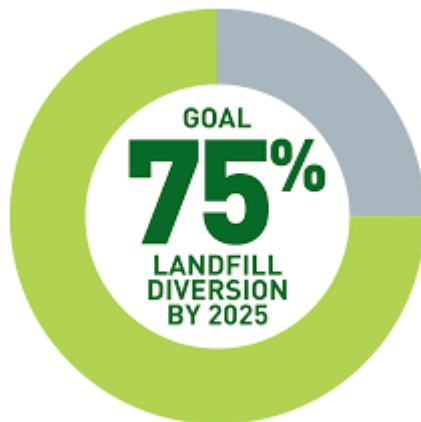


SB 1383 OVERVIEW



In September 2016, Governor Brown Jr. set methane emission reduction targets for California (Senate Bill 1838 Lara, Chapter 395, Statutes of 2016) in a statewide effort to reduce emissions of short-lived climate pollutants. The target requires the state to reduce organic waste [food waste, green waste, paper products, etc.] disposal by 75% by 2025. The law also requires the state to increase edible food recovery by 20 percent by 2025.

- These disposal reductions will reduce at least 4 million metric tons of greenhouse gas emissions annually by 2030.
- The food recovery goal is unique and will be managed by San Joaquin County Environmental Health on behalf of all jurisdictions in San Joaquin County.



SB 1383 REQUIREMENTS



Jurisdictions will be required to:

- Identify Existing Food Recovery Capacity
- Monitor Commercial Edible Food Generators for Compliance
- Expand Existing Food Recovery
- Ensure Commercial Edible Food Generators Have Access to Food Recovery Services
- Commercial edible food generators regarding edible food donation requirements, and available edible food recovery organizations
- Educational material must be linguistically accessible to our non-English speaking residents.





SECTION 8.16.010 ADDED DEFINITIONS

“Tier One Commercial Edible Food Generator” means a Commercial Edible Food Generator that is one or more of the following:

- Supermarket.
- Grocery Store with a total facility size equal to or greater than 10,000 square feet.
- Food Service Provider.
- Food Distributor.
- Wholesale Food Vendor.

“Tier Two Commercial Edible Food Generator” means a Commercial Edible Food Generator that is one or more of the following:

- Restaurant with 250 or more seats, or a total facility size equal to or greater than 5,000 square feet.
- Hotel with an on-site Food Facility and 200 or more rooms.
- Health facility with an on-site Food Facility and 100 or more beds.
- Large Venue.
- Large Event.
- A State agency with a cafeteria with 250 or more seats or total cafeteria facility size equal to or greater than 5,000 square feet.
- A Local Education Agency facility with an on-site Food Facility.

SECTION 8.16.310 EDIBLE FOOD RECOVERY



- Commercial Edible Food Generators shall comply with the following requirements:

Arrange to recover the maximum amount of Edible Food that would otherwise be disposed.

Contract or enter into a written agreement with Food Recovery Organizations or Food Recovery Service for: (i) the collection of Edible Food for Food Recovery; or (ii) acceptance of the Edible Food that the Commercial Edible Food Generator self-hauls to the Food Recovery Organization for Food Recovery.

Shall not intentionally spoil Edible Food that is capable of being recovered by a Food Recovery Organization or a Food Recovery Service.

SECTION 8.16.310 EDIBLE FOOD RECOVERY



- Requirements for Food Recovery Organizations and Services:

Food Recovery Services collecting or receiving Edible Food directly from Commercial Edible Food Generators, via a contract or written agreement established under shall maintain the following records,

The name, address, and contact information for each Commercial Edible Food Generator from which the service collects Edible Food.

The quantity in pounds of Edible Food collected from each Commercial Edible Food Generator per month.

The quantity in pounds of Edible Food transported to each Food Recovery Organization per month.

The name, address, and contact information for each Food Recovery Organization for which the Food Recovery Service transports Edible Food for Food Recovery.



Thank you for your time! Questions?