

East Bay Community Energy: Clean Energy, Low Rates, & Local Investment

March 13, 2023
Lathrop City Council Meeting - Item 2.2

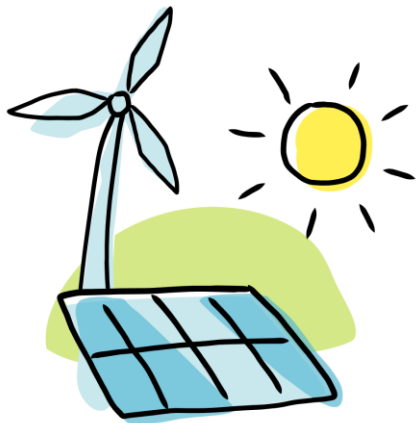


What is EBCE?

East Bay Community Energy (EBCE) is a local, community choice power supplier committed to providing Alameda County and the City of Tracy with clean, green electricity at low rates. EBCE reinvests earnings back into the community to create local green energy jobs, local energy programs, and clean power projects.

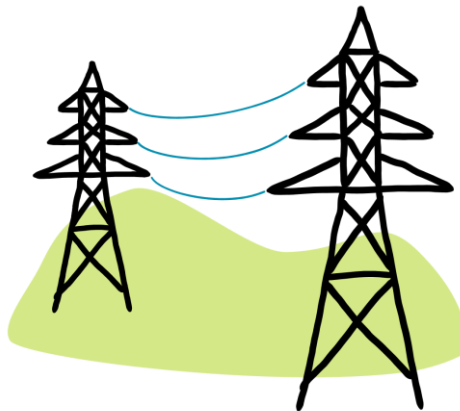


How it Works



EBCE BUYS CLEAN POWER

EBCE buys from, and is building, clean power plants. EBCE sells the power to customers at low rates.



PG&E DELIVERS THE POWER

EBCE's power is delivered to customers by PG&E. Customers pay PG&E for power delivery as they always have.



YOU GET THE POWER AND ALL THE BENEFITS

You benefit from clean energy, low rates, local governance, and innovative programs.

What Are the Benefits?



LOWER RATES



**LOCAL CONTROL
& INVESTMENT**

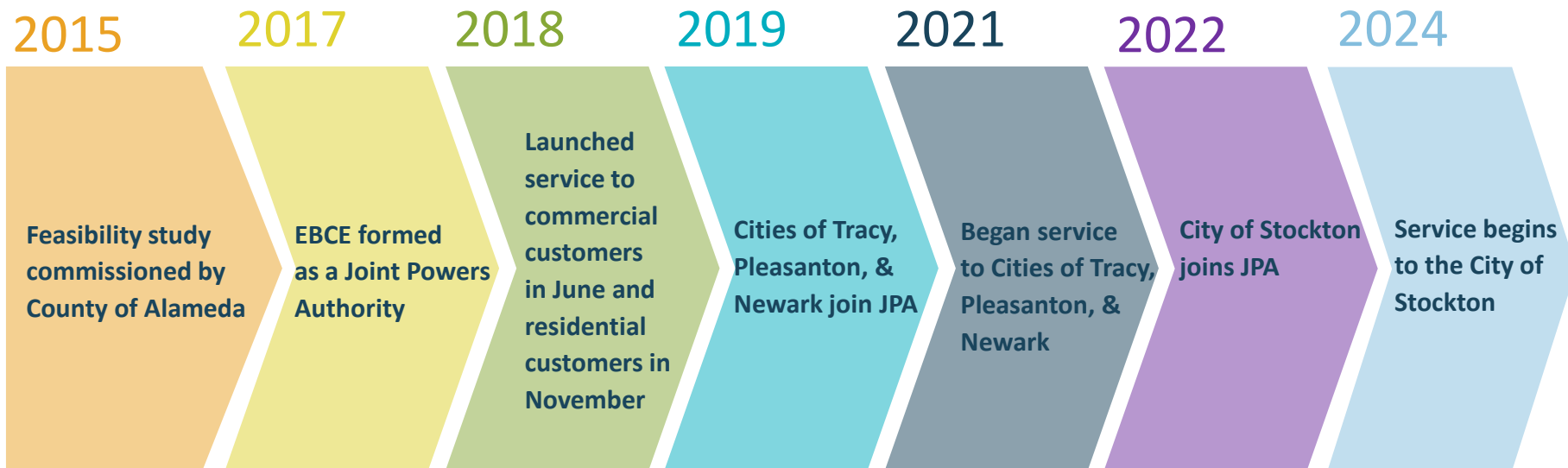


SUSTAINABILITY



**CUSTOMER CHOICE
& PROGRAMS**

History in Brief



What Are My Options?



BRIGHT CHOICE

50% renewable energy
at rates 3% below PG&E



RENEWABLE 100

100% California solar &
wind energy at $\frac{3}{4}$ cent per
kilowatt-hour above PG&E
rates



PG&E

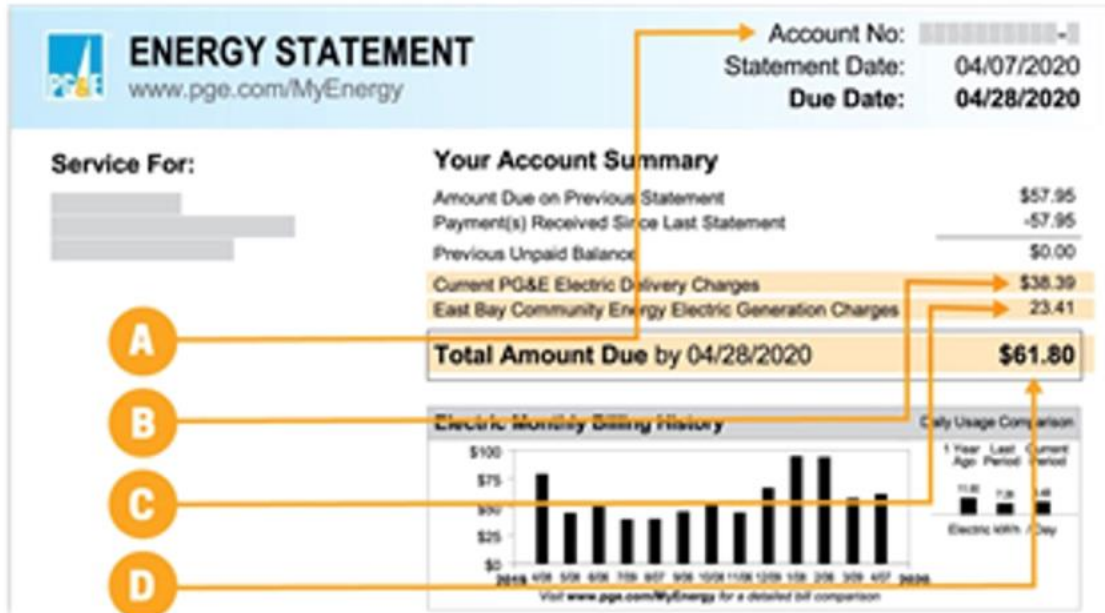
KEY

Wind Solar Hydro Biomass & Biowaste, Geothermal, Eligible Hydroelectric
Other or Unspecified Natural Gas Nuclear

Understand Your Bill

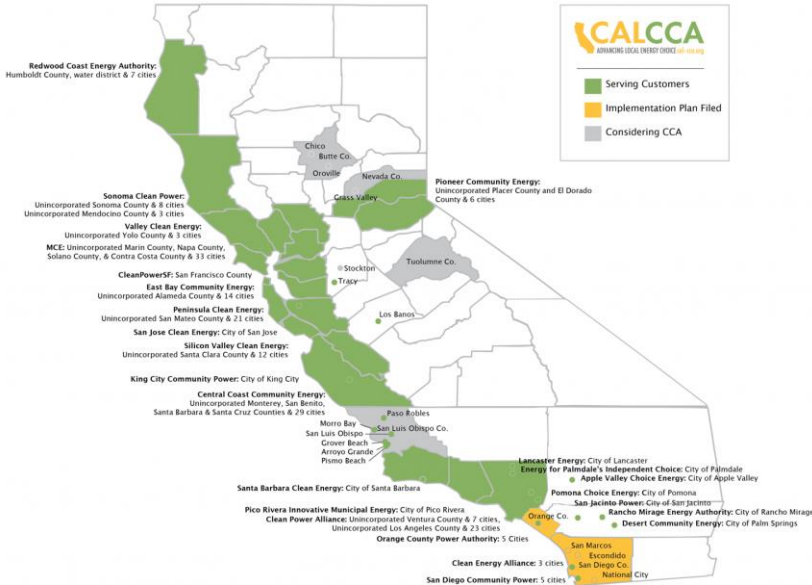
EBCE 'Generation Charges' (C) are not additional charges; they replace PG&E charges, which appear as credits (F) on PG&E bills.

To calculate your savings and find more information on understanding your bill, go to ebce.org/understand-your-bill



CCAs Are Proven Across California

CALIFORNIA CCAs



Over 11,000 Megawatts
of new clean generation capacity contracted
through long term Power Purchase Agreements by
CCAs across California

25

Currently, 25 CCAs operate in
California, spanning over 200 cities,
towns, and counties

11M

11 Million California customers are served
by CCAs

640K

EBCE serves over 640,000 customers

\$19M

EBCE customers will save \$19 Million
throughout the 22-23 FY

\$21M

EBCE has an annual budget of \$21
Million for local programs and
development

What Are the Benefits? *City of Tracy*

- Lower Rates:
 - ~\$1,688,000+ Tracy's citywide customer rate savings (since April 2021)
 - \$19M+ annual, service area-wide EBCE rate savings (FY 2022-23)
- Local Control: Councilmembers Matt Bedolla & Dan Arriola serve on EBCE's Board of Directors. The City of Stockton will appoint a Board member by Q2 2023
- Customer Choice: 91.1% customer retention rate (=8.9% customer opt out rate)
- Innovative Energy Programs:
 - Medium- and Heavy-Duty Goods Movement Electrification Blueprint
 - Municipal Fleet Electrification Technical Assistance
 - EBCE's EV Fast Charge Network
 - Resilience: S+S at Critical Municipal Facilities



Local Development

Local Programs to support economic growth and workforce development, decarbonization and community resilience

Transportation Electrification

- Public charging for renters
- Medium/heavy duty vehicle electrification
- Micromobility

Building Electrification

- Induction Cooking
- Low/Moderate income electrification

Resilience

- Resilient Home Virtual Power Plant
- Critical Municipal Facilities PPA

Energy Efficiency

- Commercial Energy Efficiency
- Electrification / Grid Services

Long-Term Energy Contracts

EBCE is looking to add more California clean generation and storage to the grid.

These contracts are enabling new construction of clean energy solutions.

12 PROJECTS CONTRACTED

740+ MEGAWATTS OF WIND AND SOLAR

274+ MEGAWATTS OF BATTERY STORAGE



Scott Haggerty Wind Energy Center | Online July 2021

100% Carbon-free Base Product by 2030

On December 16, 2020, EBCE's Board of Directors unanimously approved a goal to provide 100% clean power by 2030—fifteen years ahead of the State's goals to do so.



Steps to Joining EBCE

1. Meetings with City staff/elected officials
2. 2-3 presentations to the City Council & Council considers joining JPA
3. EBCE staff conducts quantitative analysis
4. EBCE Board & Community Advisory Committee review analysis and Board considers including new community
5. If Board Approves, EBCE updates JPA and files amended Implementation Plan with the CPUC before 12/31/23

2024: Community outreach in new community

2025: EBCE enrolls customers in new community

Thank You!



Questions? Give us a call:

1-833-699-EBCE (3223)



@PoweredbyEBCE



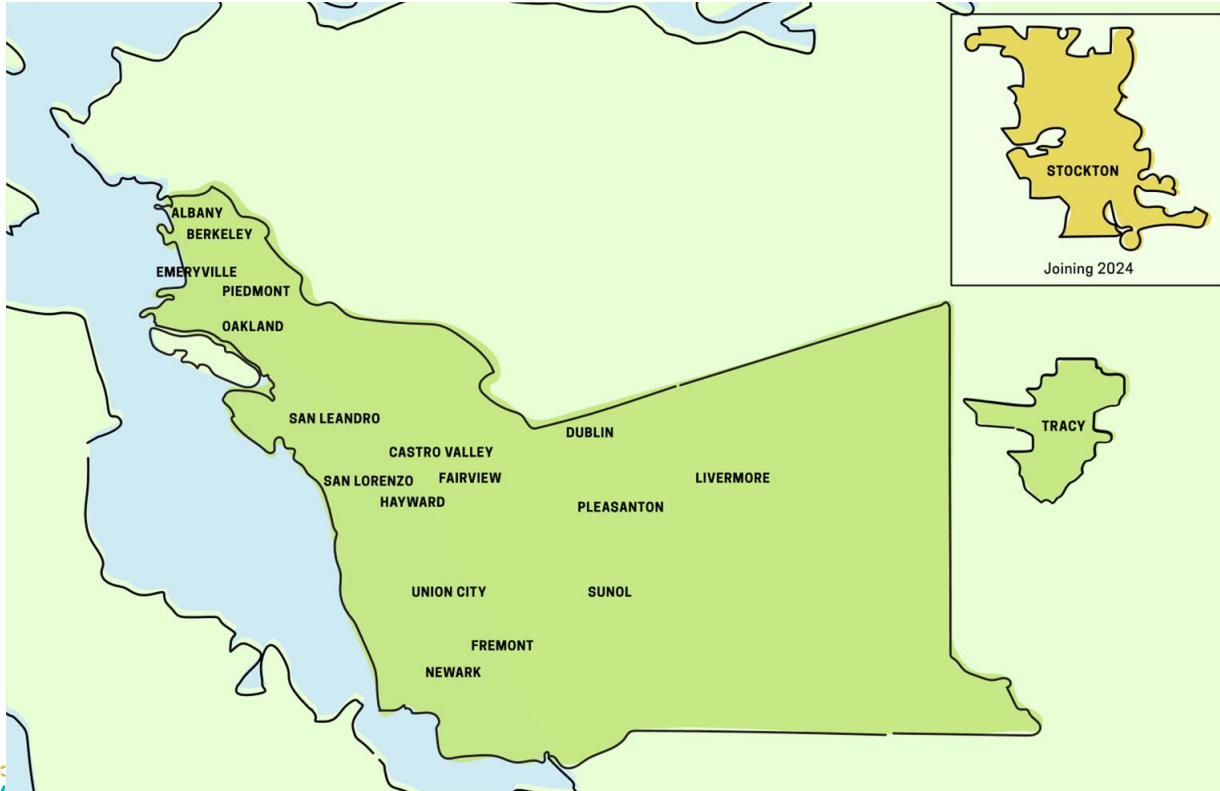
customer-support@ebce.org

Español
ebce.org/es

中文
ebce.org/cn

Additional Slides

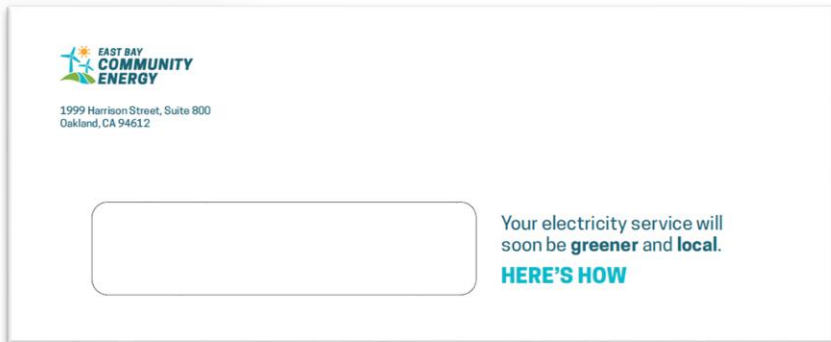
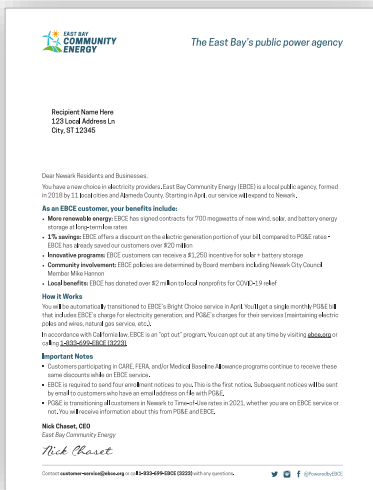
EBCE Member Jurisdictions



Alameda County, its cities* and the City of Tracy are members of EBCE's Joint Powers Authority (JPA). The City of Stockton joined the JPA in 2022 with EBCE's service to begin in 2024.

Customer Notification

- Four (4) enrollment notices via mail & email
- Customers can request to return to PG&E anytime
- EBCE staff develops a customized community outreach plan in collaboration/consultation with City staff



Partnership with Community Organizations

Community Innovation Grants

Awarding funds to community organizations to support building electrification, transportation electrification, community resilience, and energy efficiency.

Covid-19 Relief

EBCE contributed \$2.2 million to local organizations for Covid-19 Relief efforts.

Bill Assistance Programs Outreach

Awarded funds to community-based organizations to support customer enrollment in bill assistance programs like CARE/FERA/Medical Baseline/AMP.

Community Sponsorships

Three times per year, EBCE issues sponsorships of up to \$2,500 each to dozens of local organizations to help make our community shine. We also sponsor community events.



EBCE Local Programs - Resilience

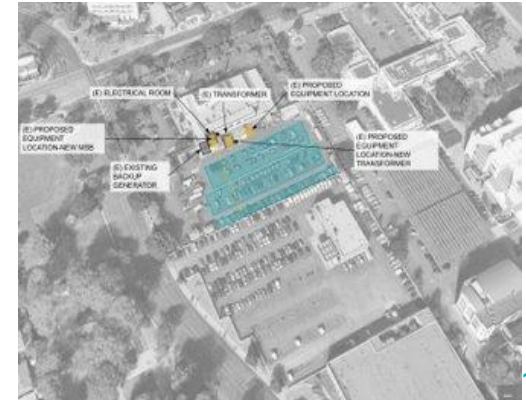
Resilient Home

EBCE has partnered with Sunrun — a leading residential solar provider—to offer home solar + battery storage systems for our customers at pre-negotiated pricing. EBCE customers can receive \$500 after installation! Batteries are dispatched in the afternoon when price and carbon intensity are high to reduce EBCE procurement costs, stabilizing the grid and lowering costs for all EBCE customers.



Resilient Critical Municipal Facilities

EBCE has developed a new, innovative, deployment model to partner with Cities to develop solar + storage solutions on municipal critical infrastructure, like fire stations, police stations, libraries and community centers. EBCE completes all pre-development activities and issues solicitation for development and operation. Phase 1 is in process with 4 cities and additional cities are enrolled in Phase 2.



EBCE Local Programs - Transportation

Public DC Fast Chargers

EBCE is developing a portfolio of publicly available fast chargers for passenger electric vehicles. We are partnering with our Cities to identify charging station sites located within multi-family hot spots that have been mapped with EBCE's proprietary mapping tool. EBCE is developing the first 11 stations now, to begin service in 2024.



Regional Medium-Heavy Electrification

EBCE is developing a regional blueprint to make Alameda County, Tracy and Stockton a first mover for Medium and Heavy duty electrification.

E-Bike Lending program

EBCE released an RFP for an organization to support a 3-year \$6M electric bike lending and incentive program. ACTC has recently approved an additional \$4M in incentives. Stockton service was included in the solicitation and will be in initial launch plan.



EBCE Local Programs - Electrification/Efficiency

Induction Cooktop Lending Program

A way for residents to borrow and “test drive” induction cooking in their home for free! This program is available to all EBCE customers. Participants who post video and hashtag #CleanCookingEBCE are entered to win an induction cooktop.

Health-e Home

EBCE has partnered with BlocPower to electrify low and moderate income residents. EBCE has provided \$400k in incentives and \$1M in low cost capital to fund efficiency and electrification retrofits for LMI households.

Commercial Energy Efficiency

EBCE received \$14.5M in state funding to run a commercial energy efficiency program with a focus on peak load reduction and electrification. Cascade Energy will implement the program, scheduled to launch in April, 2023.

