

PUBLIC HEARING (PUBLISHED NOTICE) TO CONSIDER ADOPTING AN
ORDINANCE TO IMPLEMENT A COMMUNITY CHOICE AGGREGATION PROGRAM
AND ADOPTING RESOLUTION TO APPROVE A JOINT POWERS AGREEMENT WITH
EAST BAY COMMUNITY (EBCE) AUTHORITY TO PROVIDE ELECTRIC SERVICES IN
THE CITY OF LATHROP

CITY COUNCIL REGULAR MEETING

JULY 10, 2023 – ITEM 5.1



BACKGROUND



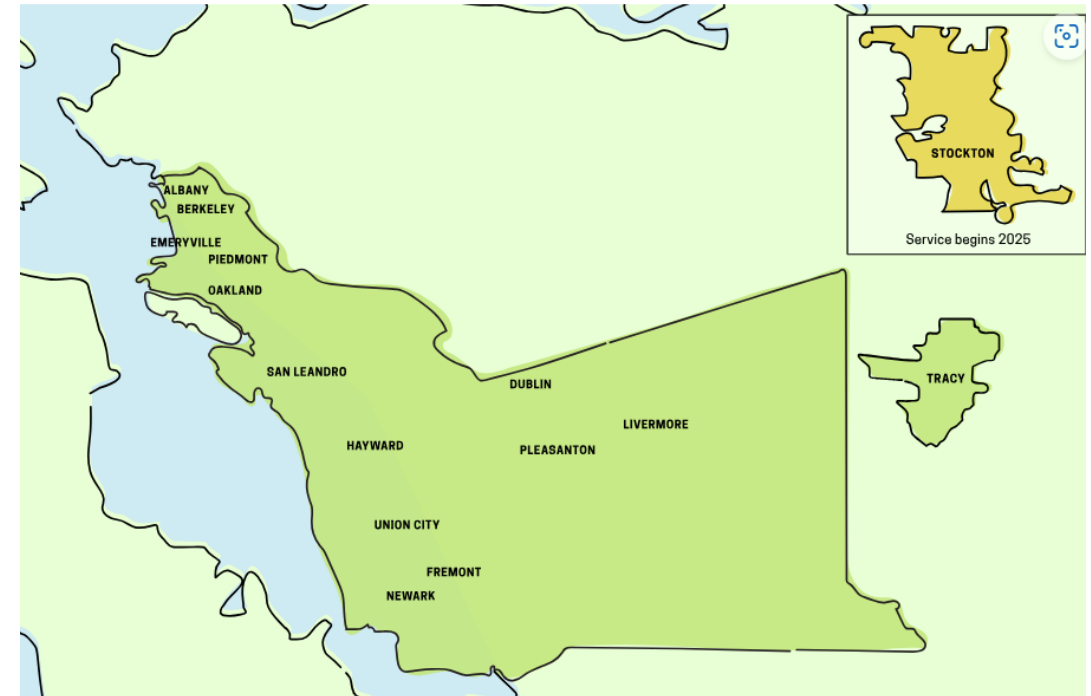
- On March 13, 2023 Council received a presentation from East Bay Community Energy (EBCE) regarding the benefits of implementing a Community Choice Aggregation (CCA) program.
 - Who is EBCE
 - How a CCA works
 - What are the benefits
 - Options for residents
 - Sample electrical bill
 - Timeline



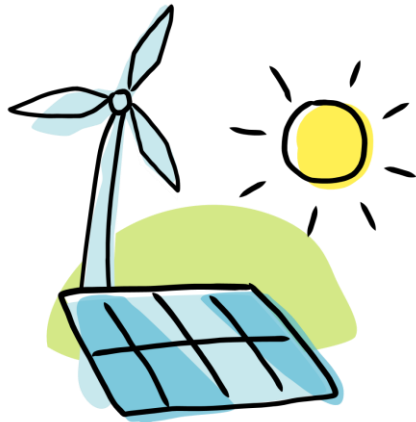
RECAP - CCA AND EBCE



- CCA: created in California by AB 117 (2002) and are governed by the California Public Utilities Commission (CPUC)
 - Currently there are 25 CCA programs serving more than 11 million customers in California
- EBCE: exists to provide more renewable energy at competitive rates to our customers
 - Established in 2018
 - Governed by a Board of Directors comprised of an elected official from each jurisdiction served.
 - Alameda County (except the City of Alameda) and the City of Tracy. EBCE will begin service to Stockton in 2025
 - 1.7M people served (businesses and residents)

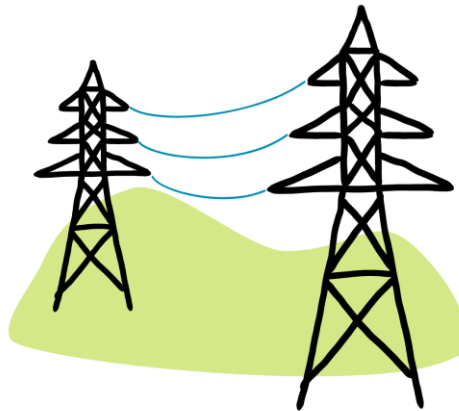


RECAP – HOW IT WORKS



EBCE BUYS CLEAN POWER

EBCE buys from, and is building, clean power plants. EBCE sells the power to customers at low rates.



PG&E DELIVERS THE POWER

EBCE's power is delivered to customers by PG&E. Customers pay PG&E for power delivery as they always have.



YOU GET THE POWER AND ALL THE BENEFITS

You benefit from clean energy, low rates, local governance, and innovative programs.

RECAP - BENEFITS FOR RESIDENTS



LOWER RATES



**LOCAL CONTROL
& INVESTMENT**



SUSTAINABILITY

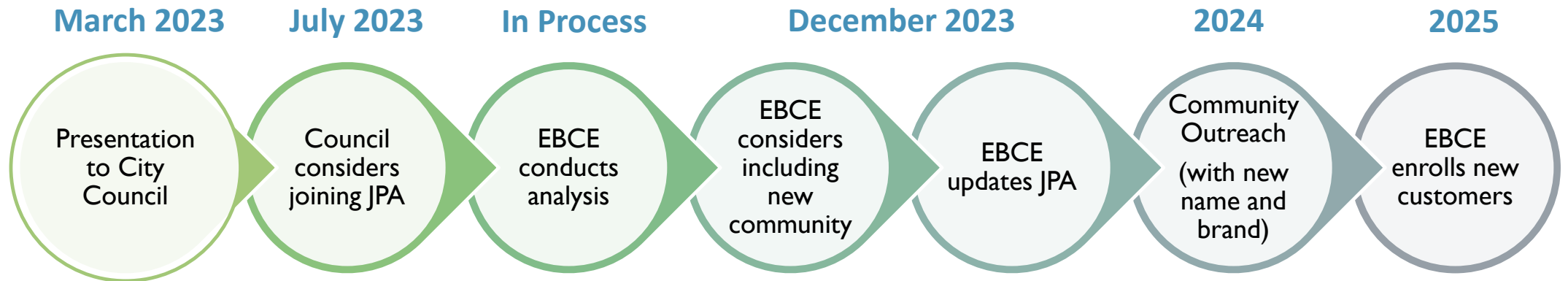


**CUSTOMER CHOICE
& PROGRAMS**

Notes:

- Does not include residents served by Lathrop Irrigation District (LID)
- Per State law, residents and businesses would automatically be enrolled in CCA
- Customers may request to opt out at any time

RECAP - TIMELINE



ORDINANCE & JPA



■ Ordinance

- Required by AB 117 in accordance with CPUC Section 366.2(c)(12)
- Purpose: specifying that the City intends to implement a CCA Program and with which authority (EBCE)

■ Joint Powers Agreement (JPA)

- JPAs are a common legal structure in California for the administration of cooperative multi-jurisdictional programs
- Contains provisions regarding as EBCE's powers, governance structure, including voting allocations, its obligation to indemnify the members, and the process for withdrawing from the authority, etc.
- As a member of EBCE, the City will have a representative on the EBCE's board of directors.

RECOMMENDATION



City Council to Consider the Following:

- Hold a Public Hearing; and
- First Reading and Introduction of an Ordinance to Implement a Community Choice Aggregation Program to Provide Electric Services in the City of Lathrop
- Adopt Resolution to Approve a Joint Powers Agreement with East Bay Community (EBCE) Authority to Provide Electric Services in the City of Lathrop