

ITEM 5.4

CITY MANAGER'S REPORT JANUARY 8, 2024 CITY COUNCIL REGULAR MEETING

ITEM: **REVIEW AND CONSIDER DESIGN ALTERNATIVES FOR HISTORIC LATHROP BEAUTIFICATION PROJECT, CIP GG 24-23**

RECOMMENDATION: **Council to Consider Design Options for the Water Fountain and Gateway Arches on 5th Street associated with Historic Lathrop Beautification Project, CIP GG 24-23**

SUMMARY:

On July 10, 2023 City Council approved the creation of Capital Improvement Project (CIP) GG 24-23 for Historic Lathrop Beautification (Project). The Project incorporated beautification elements such as monument signs, roadway arches and decorative fountains within the Historic Lathrop area. Council directed staff to present a conceptual design of proposed gateway arches on 5th Street near the Lathrop Road and Louise Avenue intersections. Council also requested staff to provide alternative design options for constructing a water fountain at the Green Belt Park.

O'Dell Engineering, Inc. (O'Dell Engineering) has been contracted to design the gateway arches on 5th Street. Prior to developing the civil, electrical, and architectural plans, O'Dell Engineering prepared a conceptual design included as Attachment (A). Staff is requesting Council to review the conceptual design and provide feedback on the elements incorporated.

Staff also requests City Council review Attachment (B) for sample designs and Attachment (C) for a proposed location within the Green Belt Park to construct a water fountain. Staff will pursue the design and location selected by Council to coordinate with O'Dell Engineering to consider the water fountain features and complete the design.

BACKGROUND:

Historic Lathrop, generally known as the area bounded by Lathrop Road on the north, Louise Avenue on the south, Harlan Road on the west and 7th Street on the east, predates the City's incorporation in 1989. Historic Lathrop has no specific plan with design standards or beautification elements.

At the July 10, 2023 City Council meeting, Council created CIP GG 24-23 for installation of gateway arches on 5th Street near the Lathrop Road and Louise Avenue intersections, and construction of a water fountain at the Green Belt Park. Staff contacted several consultants and after reviewing all proposals received, awarded a Professional Services Agreement to O'Dell Engineering to design the gateway arches.

CITY MANAGER'S REPORT **PAGE 2**
JANUARY 8, 2024 CITY COUNCIL REGULAR MEETING
REVIEW AND CONSIDER DESIGN ALTERNATIVES FOR HISTORIC LATHROP
BEAUTIFICATION PROJECT, CIP GG 24-23

Before detailing the civil, electrical, and architectural components of the gateway arches, O'Dell Engineering drafted a conceptual layout included as Attachment (A) for Council to review and provide comments.

Staff also requests City Council review the sample design alternatives (Attachment B) and proposed locations (Attachment C) within the Green Belt Park for the water fountain. Staff will pursue the design and location selected by Council to coordinate with O'Dell Engineering to complete the design.

REASON FOR RECOMMENDATION:

Direction from Council is needed to revise and finalize the design of the arches on 5th Street. Selection of a preferred design alternative and location within the Green Belt Park for the water fountain will allow the City to coordinate with O'Dell Engineering to prepare improvement plans. Staff will return to Council at a later date to request approval of a construction contract for both improvements.

FISCAL IMPACT:

Staff will pursue the design and location selected by Council and request a proposal from O'Dell Engineering to complete the improvement plans for the water fountain. If the cost exceeds the allocated funds for the design services, staff will bring an item back to Council to approve a budget amendment towards CIP GG 24-23.

ATTACHMENTS:

- A. Conceptual Design for Gateway Arches on 5th Street
- B. Sample Design Alternatives for Water Fountain at the Green Belt Park
- C. Proposed Locations for Water Fountain at the Green Belt Park

CITY MANAGER'S REPORT
JANUARY 8, 2024 CITY COUNCIL REGULAR MEETING
REVIEW AND CONSIDER DESIGN ALTERNATIVES FOR HISTORIC LATHROP
BEAUTIFICATION PROJECT, CIP GG 24-23

APPROVALS:




Angel Abarca
Assistant Engineer

12-18-2023
Date



Brad Taylor
City Engineer

12/19/2023
Date



Todd Sebastian
Director of Parks & Recreation

12/20/23
Date




Cari James
Finance Director

12/20/23
Date



Michael King
Assistant City Manager

12-19-2023
Date



Salvador Navarrete
City Attorney

12-20-2023
Date

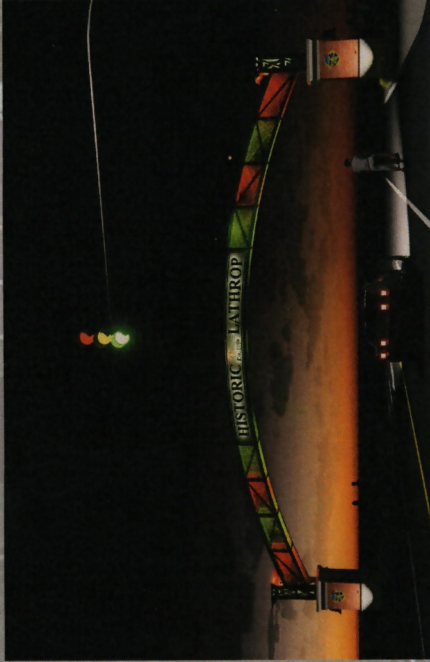


Stephen J. Salvatore
City Manager

1/3/23
Date



1 TRUSS GATEWAY INTERSECTION



2 TRUSS GATEWAY INTERSECTION AT NIGHT



3 TRUSS GATEWAY BIRD'S EYE VIEW



4 UNDER TRUSS GATEWAY PERSPECTIVE

NOTES: THIS DOCUMENT IS FOR CONCEPTUAL PLANNING PURPOSES ONLY. THIS ARCHITECTURE IS NOT TO BE CONSIDERED A FINAL DESIGN. ANY IMAGES SHOWN ARE TO CONVEY CONCEPT ONLY. CONSTRUCTION PLANS WILL VARY DEPENDING ON BUDGET, CLIENT DIRECTION, COMMUNITY INPUT AND FINAL MATERIALS SELECTION.

LATHROP GATEWAY TRUSS ARCH

12/06/2023

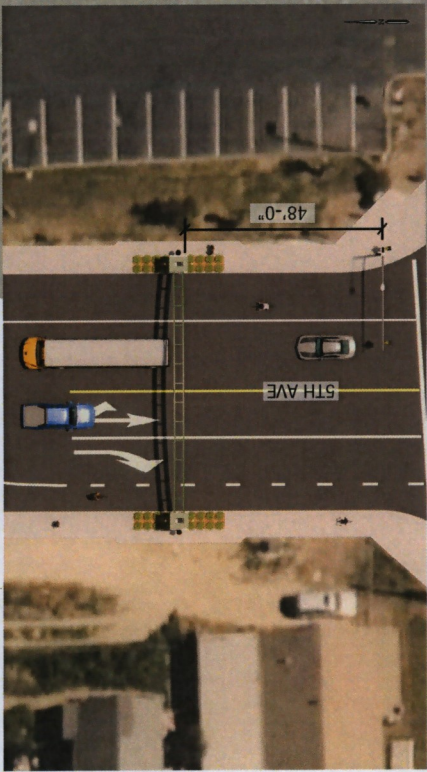
LOCOMOTIVE

CLASSIC

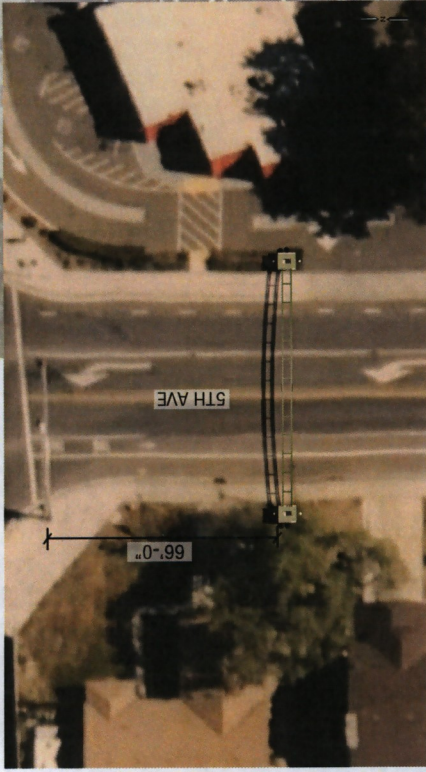
HISTORICAL
TRIBUTE

INDUSTRIAL

COMMUNITY
PRIDE



1 PLAN VIEW AT LOUISE AVE



3 PLAN VIEW AT LATHROP RD



2 CLOSE UP VIEW OF LETTERING

The Gateway Truss concept draws strong inspiration from the iconic Mossdale bridges, paying homage to Lathrop's rich history and the significance of the San Joaquin River and the Central Pacific Railroad in the city's establishment. This proposed gateway seamlessly integrates a classic structural system to craft a timeless arch, evoking a sense of classic elegance. The arch a simple clean arch with offset backlit lettering and the classic City of Lathrop logo. Anchored on both sides of the roadway, two 10-foot tall by 4-foot square pillars clad in traditional materials such as brick, capstones, and plaster bases provide a solid foundation. Ornate touches include the use of a classic train bell on either side, adding a touch of nostalgia and emphasizing a pedestrian-friendly scale. To ensure visibility at night, hidden LED lights create a glowing effect adding a touch of modernism. With an overall height of 21'-4" and a minimum vertical clearance at the roadways of 14 feet, this gateway truss stands as a symbolic and aesthetic representation of Lathrop's heritage. By seamlessly blending historical inspiration with classic elements and a touch of modernism, this design encapsulates the spirit of Lathrop, creating a distinctive gateway that captures the essence of the city's past while looking towards its future.

LATHROP GATEWAY TRUSS ARCH

12/06/2023

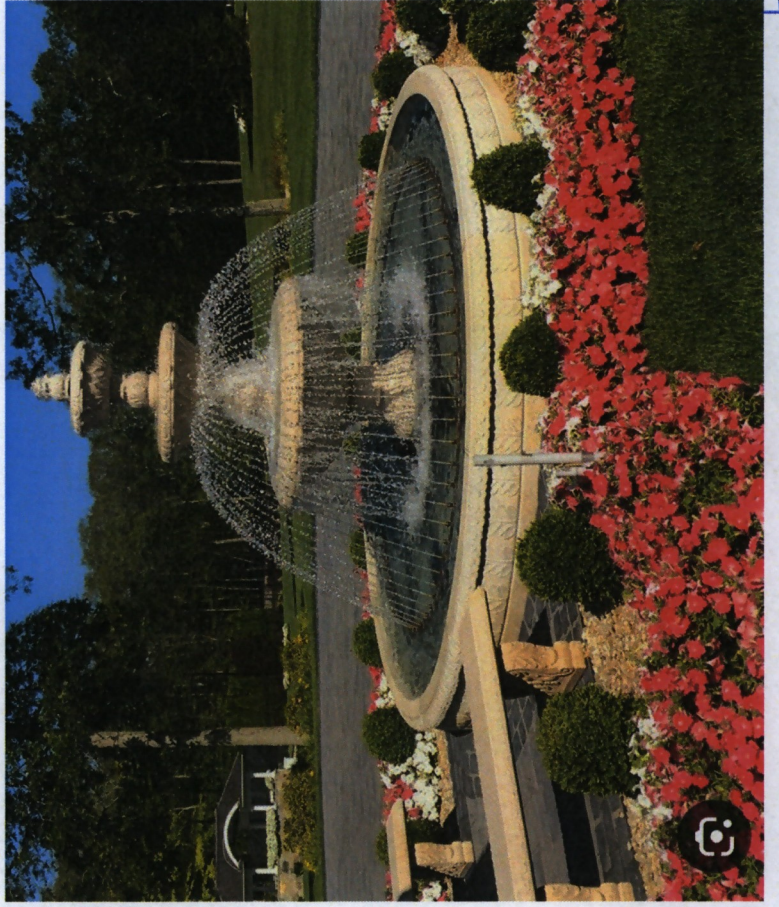
NOTE: THIS DOCUMENT IS FOR CONCEPTUAL PLANNING PURPOSES ONLY. THIS DOCUMENT IS SHARED PRELIMINARY AND NOT FOR CONSTRUCTION. THE ARCHITECT AND ENGINEER SHALL BE RESPONSIBLE FOR OBTAINING ALL NECESSARY PERMITS AND PLANS WILL VARY DEPENDING ON BUDGET, CLIENT DIRECTION, COMMUNITY INPUT AND FINAL MATERIALS SELECTION.



WATER FOUNTAIN - SAMPLE DESIGN ALTERNATIVES ATTACHMENT "B"

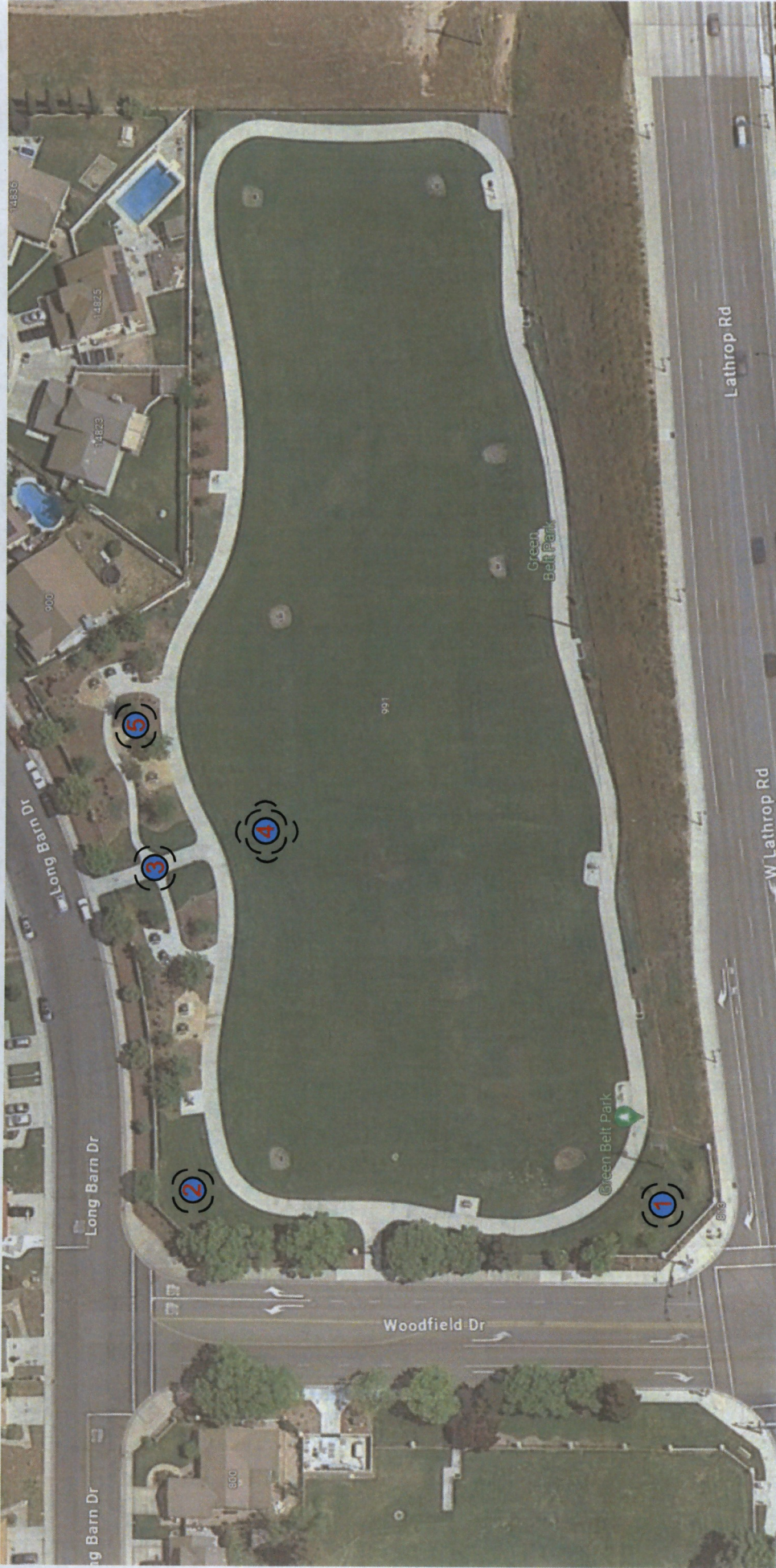


ALT (A)

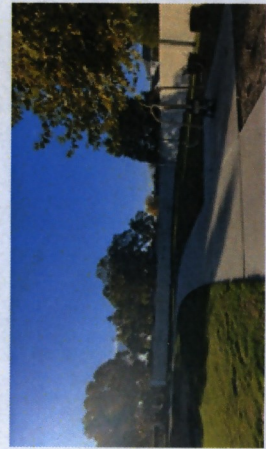


ALT (B)

WATER FOUNTAIN - PROPOSED LOCATIONS



ALT (1)



ALT (2)



ALT (3)



ALT (4)



ALT (5)

**PAGE LEFT
INTENTIONALLY
BLANK**