

REVIEW AND CONSIDER DESIGN ALTERNATIVES FOR HISTORIC LATHROP BEAUTIFICATION PROJECT, CIP GG 24-23

CITY COUNCIL REGULAR MEETING

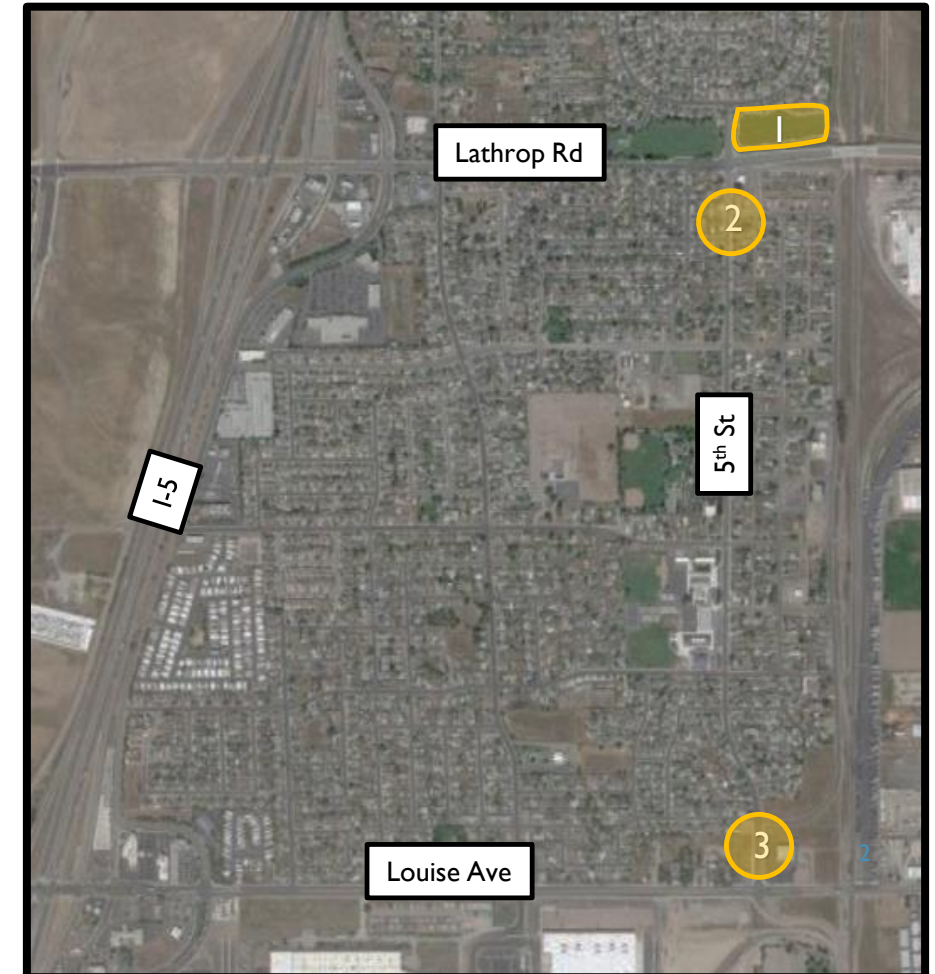
JANUARY 8, 2024 – ITEM: 5.4



BACKGROUND



- On July 10, 2023 City Council approved the creation of CIP GG 24-23 for Historic Lathrop Beautification (Project)
- The Project proposes to construct the following beautification elements:
 1. Water fountain at the Basin Park
 2. Gateway Arch on 5th St near Lathrop Rd Intersection
 3. Gateway Arch on 5th St near Louise Ave intersection
- O'Dell Engineering has been contracted to prepare the design services for the gateway arches



BASIN PARK

WATER FOUNTAIN - ALTERNATIVE LOCATIONS



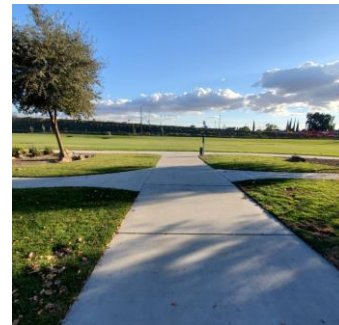
AERIAL VIEW



ALT (1)



ALT (2)



ALT (3)



ALT (4)



ALT (5)

BASIN PARK PROPOSED FOUNTAIN STYLES



ALT (A)



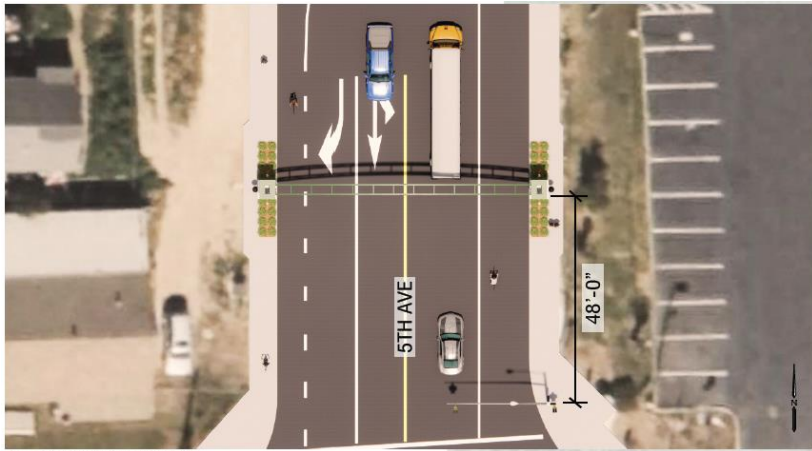
ALT (B)

BASIN PARK SAMPLE FOUNTAIN STRUCTURES



LATHROP GATEWAY CONCEPTUAL DESIGN

ALT (A) – TRUSS ARCH



1 PLAN VIEW AT LOUISE AVE

NTS



1 TRUSS GATEWAY INTERSECTION



2 CLOSE UP VIEW OF LETTERING



3 PLAN VIEW AT LATHROP RD

NTS



3 TRUSS GATEWAY BIRD'S EYE VIEW



4 UNDER TRUSS GATEWAY PERSPECTIVE

LATHROP GATEWAY CONCEPTUAL DESIGN ALT (B) – RIVER ISLANDS THEME



① RI MATCHING GATEWAY INTERSECTION



② RI MATCHING GATEWAY INTERSECTION AT NIGHT



③ RI MATCHING GATEWAY BIRD'S EYE VIEW



④ UNDER RI MATCHING GATEWAY PERSPECTIVE

RECOMMENDATION



Staff is requesting City Council to provide direction on:

➤ **Water Fountain:**

- Location
- Style

➤ **Arches:**

- Conceptual Design
 - Structure
 - Lighting
- Staff will pursue the design and location selected by Council to coordinate with O'Dell Engineering to consider the water fountain features and complete the design.