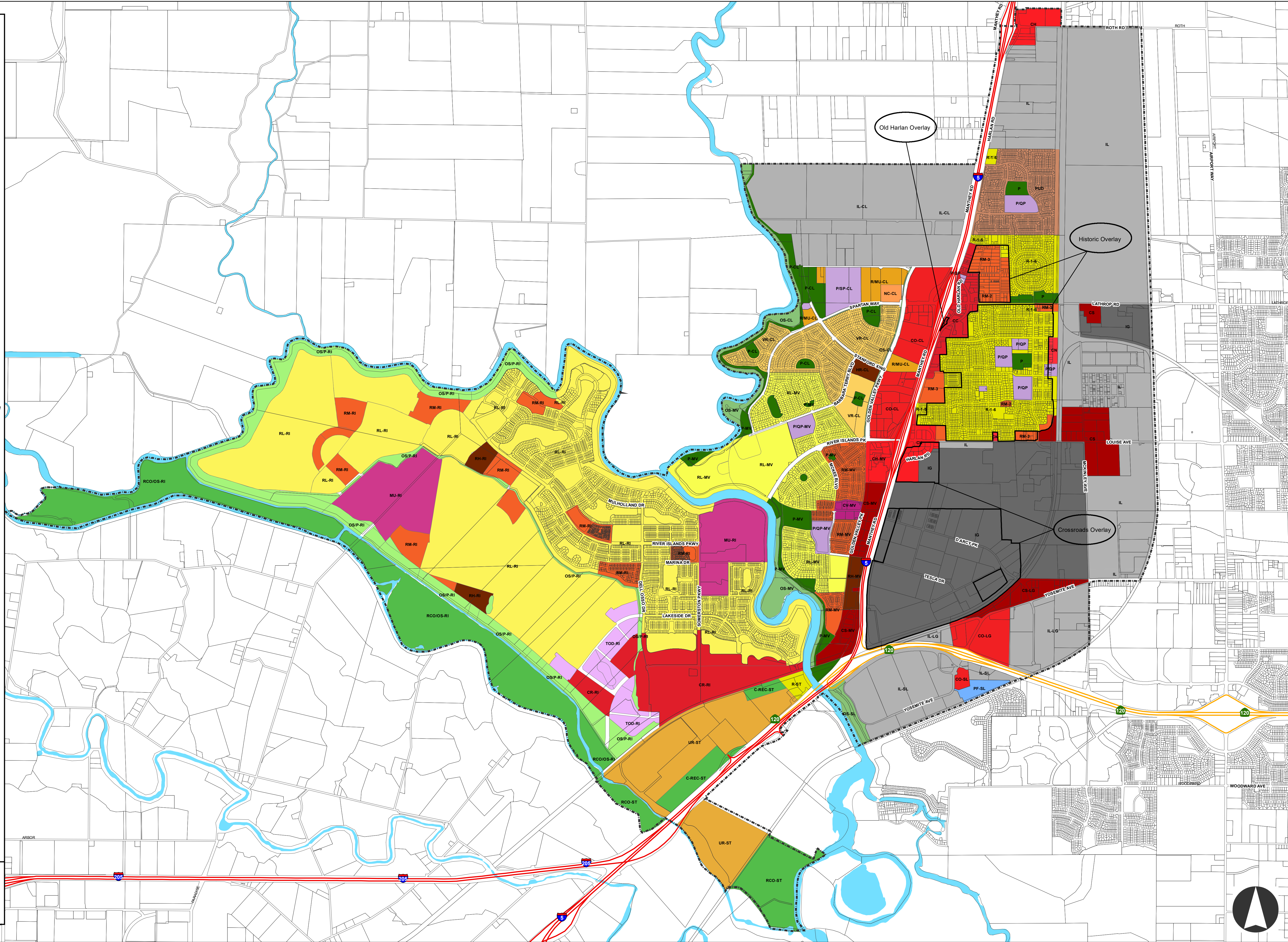


- CITY PROPER**
- PUD, Planned Unit Development
 - R-1-5, R One Family Residential
 - R-1-6, R One Family Residential
 - RM-2, Multi-Family Residential
 - RM-3, Multi-Family Residential
 - CC, Central Commercial
 - CH, Highway Commercial
 - CN, Neighborhood Commercial
 - CS, Commercial Service
 - IL, Limited Industrial
 - IG, General Industrial
 - P, Park
 - P/QP, Public / Quasi-Public
- CENTRAL LATHROP**
- VR-CL, Variable Density Residential
 - RMU-CL, Residential/Mixed Use
 - HR-CL, High Density Residential
 - CO-CL, Commercial Office
 - NC-CL, Neighborhood Commercial
 - OS-CL, Open Space
 - P-CL, Park
 - IL-CL, Limited Industrial
 - P/SP-CL, Public / Semi-Public
- MOSSDALE VILLAGE**
- RL-MV, Low Density Residential - Mossdale Village
 - RM-MV, Medium Density Residential - Mossdale Village
 - RH-MV, High Density Residential - Mossdale Village
 - CH-MV, Highway Commercial - Mossdale Village
 - CS-MV, Service Commercial - Mossdale Village
 - CV-MV, Village Commercial - Mossdale Village
 - OS-MV, Open Space - Mossdale Village
 - P-MV, Park - Mossdale Village
 - P/QP-MV, Public / Quasi-Public - Mossdale Village
- LATHROP GATEWAY**
- CO-LG, Commercial Office
 - CS-LG, Commercial Service
 - IL-LG, Limited Industrial
- SOUTH LATHROP SPECIFIC PLAN**
- CO-SL, Commercial Office
 - IL-SL, Limited Industrial
 - PF-SL, Public Facilities
 - OS-SL, Open Space
- RIVER ISLANDS**
- RL-RI, Residential Low
 - RM-RI, Residential Medium
 - RH-RI, Residential High
 - CR-RI, Regional Commercial
 - TOD-RI, Transit Oriented Development
 - MU-RI, Mixed Use Town Center
 - RCO/OS-RI, Resource Conservation and Open Space
 - OSP-RI, Open Spaces/Public Uses
- STEWART TRACT**
- R-ST, Residential
 - C-REC-ST, Commercial Recreation
 - RCO-ST, Resource Conservation and Open Space
 - UR-ST, Urban Reserve
- City Limits
Parcels



Adopted Date: 11/13/2023
Document Path: S:\GIS\Armando\ODD\Zoning\2024_04_29_Zoning.mxd

Zoning Map

City of Lathrop

Disclaimer: Data shown may not be accurate and is for mapping purposes only. Contact the City for more information.

