

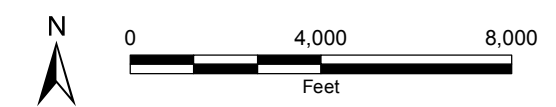
- Legend**
- County
 - City Limit
 - Sacramento-San Joaquin River Delta
 - Groundwater Sustainability Agencies**
 - City of Lathrop GSA
 - Stewart Tract GSA
 - DWR Groundwater Basins**
 - 5-22.01: Eastern San Joaquin Subbasin
 - 5-22.15: Tracy Subbasin

Abbreviations
 DWR = California Department of Water Resources
 GSA = Groundwater Sustainability Agency

Notes
 1. All locations are approximate.

Sources

1. Groundwater basins from DWR's Final 2016 Bulletin 118 Groundwater Basin Boundaries, downloaded 24 October 2016. Basin boundaries reflect the final revisions approved as part of the 2016 basin boundary modification process.
2. CASGEM priority ranking from June 2014 Basin Prioritization Process.
3. Basemap: Esri's World Reference and World Terrain Base, accessed 7 February 2018.



Groundwater Sustainability Agencies Within City Limit

Path: X:\B60009\Maps\2018\02\Fig5_4_GSAs.mxd