

**ADDENDUM NO. 2 - June 25, 2021**

**River Islands Parkway Widening Project – Phase 2  
CIP PS 06-06**

This Addendum 2 Clarifies Addendum 1 for this project, released on June 24, 2021 and amends the Contract Drawings and Specifications for this project as follows:

1. Replace the Bid Schedule in Part II, Section A *Bid Proposal Forms* with Attachment A – Revised Bid Schedule
2. Revisions made to install additional signing and striping. Refer to Attachment B, revised plansheets SS1, SS2 and support sheet and the revised Bid Schedule.
3. Increase Microsurfacing area to approx. 70,000 SF. Refer to Attachment C, revised plansheet SS1 and the revised Bid Schedule.
4. For Add Alt 1 bid item, Refer to Attachment D, Revised plansheets E-1, E-2 and revised Bid Schedule.
5. Add to the Contract Specifications in Part V, Section C-25 (f) *Submittals* Attachment E - CalRecycle Form 168 *Reliable Contractor Declaration* and instructions. This form must be filled out, signed and submitted with the Contractor's bid.
6. The City will contract and pay for staking.
7. Polypropylene is the approved material for the 18" storm drain. Do not use PVC
8. Coordination with Caltrans will be needed for work to be performed within their right-of-way including, but not limited to:
  - a. Ramp closures (Traffic Control Plans will be needed and approved by Caltrans)
  - b. Night work (seal coating, AC work on off ramps, signal mods, etc.)
9. Contractor will need to acquire a Provisional Encroachment Permit from Caltrans
10. Coordination with PG&E will be needed for replacement of the #7 vault lid
11. All ¾" HMA to conform to Caltrans Type A HMA.

When submitting the bid for the project, the Contractor must acknowledge receipt of the addendum.

Recommended by: Ken Reed 6-25-2021  
Ken Reed Date  
Senior Construction Manager

Approved by: Michael King, P.E. 6-25-2021  
Michael King, P.E. Date  
Public Works Director

ATTACHMENT A

**REVISED BID SCHEDULE – RIVER ISLANDS PARKWAY WIDENING - PHASE 2  
PS 06-06**

Bid Item	Description	Quantity	Units	Unit Price	Extended Price
1	Sawcut and remove existing pavement	544	SF		
2	2" Grind	3,610	SF		
3	Remove ex curb and gutter	346	LF		
4	Remove existing sidewalk	1,117	SF		
5	Remove ex curb ramp	1	EA		
6	Mobilization	1	LS		
7	Rough Grade street widening	330	CY		
8	Finish Grade street	3,774	SF		
9	7" A.C. pavement including seal coats and conforms	164	TON		
9A	Microsurfacing	70,000	SF		
10	16.5" Class II Aggregate Base	307	TON		
11	17.5" AB under curb and gutter	69	TON		
12	2" A.C. overlay including conforms	68	TON		
13	Interim traffic control	1	LS		
14	Erosion control	1	LS		
15	6" Standard curb and gutter	399	LF		
16	Relocate City Standard Catch Basin	1	EA		
17	Caltrans Vertical Curb A1-6	108	LF		
18	Monolithic Sidewalk	1,489	SF		
19	Curb Ramp with detectable warning surface	1	EA		
20	18" RCP pipe	6	LF		
21	Relocate ex catch basin frame and grate	1	EA		
22	Raise valve boxes to grade	1	EA		
23	Raise Fire Hydrant to grade	1	EA		
24	Raise ARV to grade	1	EA		
25	Relocate existing traffic signal interconnect box	5	EA		
26	Signal modification of Southbound I-5 and River Islands Parkway	1	EA		
27	Roadside Sign (Metal Post)	10	EA		
28	Relocate Roadside sign	3	EA		
29	6" Thermoplastic Traffic stripe	1,810	LF		
30	8" Thermoplastic Traffic stripe	1,080	LF		

ATTACHMENT A

31	12" Thermoplastic Stripe	86	LF		
32	Thermoplastic Pavement Arrows	9	EA		
33	Pavement Marker (Retroreflective)	1	EA		
34	Remove Thermoplastic Traffic Stripe and Pavement Markings	2,859	LF		
35	Pedestrian Barrier	2	EA		

**TOTAL BASE BID: \$** \_\_\_\_\_

**TOTAL BASE BID IN WORDS:** \_\_\_\_\_

**BID ALTERNATE 1**

<b>BID ITEM</b>	<b>DESCRIPTION</b>	<b>QUANTITY</b>	<b>UNITS</b>	<b>UNIT PRICE</b>	<b>EXTENDED TOTAL</b>
ALT 1	Install signal modifications per plans- Attachment D to delete loops and install video detection camera on SMA with riser. (ITERIS model vantage detector next hybrid video/radar system)	1	LS		

**TOTAL BID ALTERNATE 1: \$** \_\_\_\_\_

**TOTAL BID ALTERNATE 1 IN WORDS:** \_\_\_\_\_





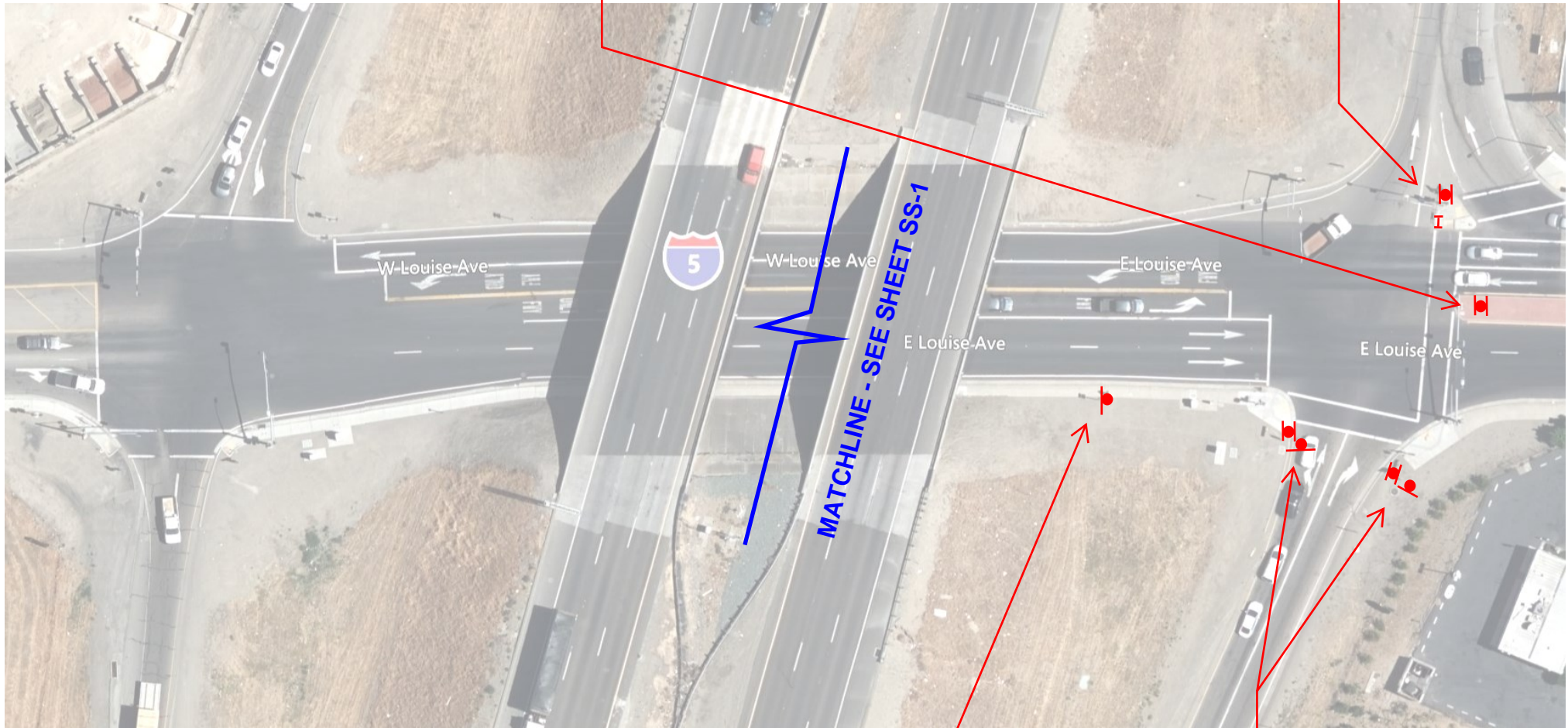
Remove and replace ex signs:

- R3-18
- R4-7
- Type K-1



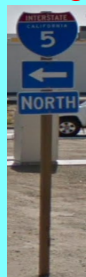
Remove and replace ex signs:

- R49 (CA)
- G92 (CA)
- G27-1 (CA)
- M3-1
- M6-2aR
- Type K -1



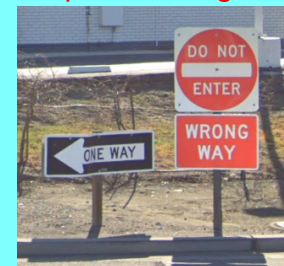
Remove and replace ex signs:

- G27-1 (CA)
- M6-1L
- M3-1



Remove and replace ex signs:

- R6-1
- R5-1
- R5-1a



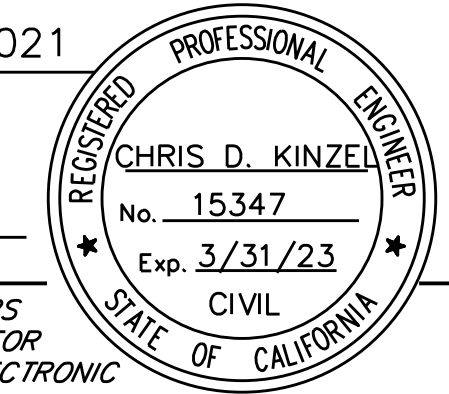
DIST	COUNTY	ROUTE	POST MILES TOTAL PROJECT	SHEET No.	TOTAL SHEETS
10	SJ	5	16.4	9	9

*Chris D. Kinzel* 06/2021  
 REGISTERED CIVIL ENGINEER DATE

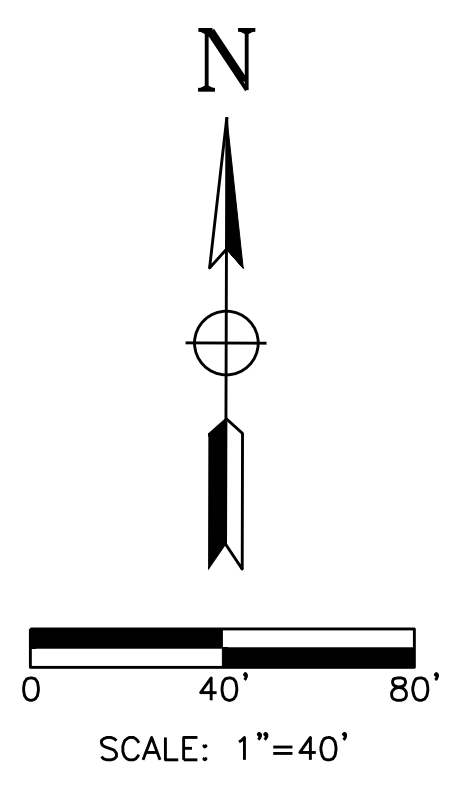
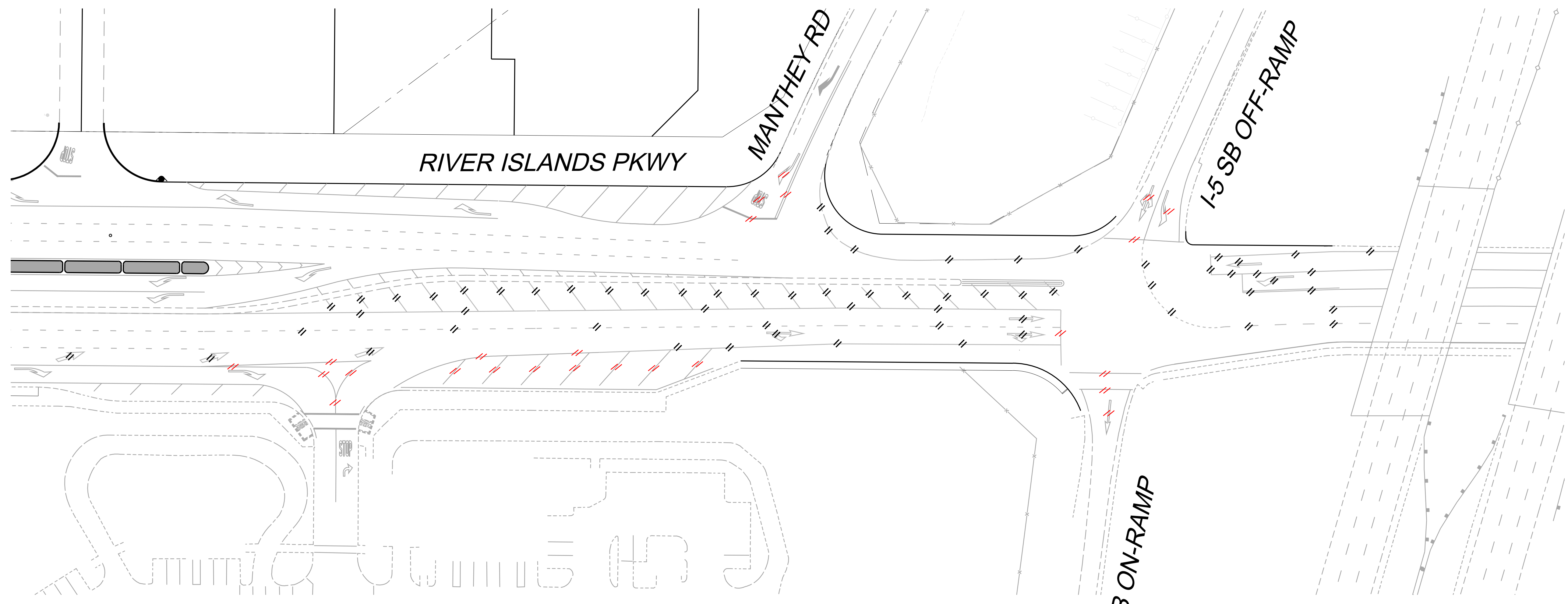
PLANS APPROVAL DATE \_\_\_\_\_

THE STATE OF CALIFORNIA OR ITS OFFICERS OR AGENTS SHALL NOT BE RESPONSIBLE FOR THE ACCURACY OR COMPLETENESS OF ELECTRONIC COPIES OF THIS PLAN SHEET.

T&M TRANSPORTATION CONSULTANTS  
 4305 HACIENDA DRIVE, SUITE 550



OVERSIGHT FUNCTIONAL SUPERVISOR	CALCULATED/DESIGNED BY	REVISOR BY
	CHECKED BY	DATE REVISED
PAVEMENT MARKINGS AND TRAFFIC LINES TYPICAL DETAILS	ESB	ESB



BEFORE EXCAVATING  
 CALL U.S.A.  
 UNDERGROUND SERVICE ALERT  
 800-227-2600  
 TWO WORKING DAYS BEFORE ALL  
 PLANNED WORK OPERATIONS

**SIGNING AND STRIPING  
 REMOVAL PLAN**  
 SCALE 1" = 40'

SS-2

FOR REDUCED PLANS ORIGINAL SCALE IS IN INCHES

USERNAME => USER  
 DGN FILE => FILE

CU EA

LAST REVISION  
 DATE PLOTTED =>  
 JUNE 2021 TIME PLOTTED =>



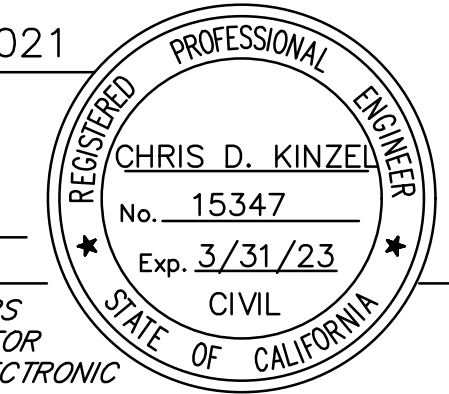






DIST	COUNTY	ROUTE	POST MILES TOTAL PROJECT	SHEET No.	TOTAL SHEETS
10	SJ	5	16.4	7	9

Chris D. Kinzel 06/2021  
REGISTERED CIVIL ENGINEER DATE



PLANS APPROVAL DATE

THE STATE OF CALIFORNIA OR ITS OFFICERS OR AGENTS SHALL NOT BE RESPONSIBLE FOR THE ACCURACY OR COMPLETENESS OF ELECTRONIC COPIES OF THIS PLAN SHEET.

T&M TRANSPORTATION CONSULTANTS  
4305 HACIENDA DRIVE, SUITE 550  
PLEASANTON, CA 94588

CONDUCTOR AND CONDUIT SCHEDULE		RUNS						
AWG OR CABLE	POLE	Ø	1	2	3	4	5	6
			CONDUIT SIZE (IN)	2-3"	3"	4"	4"	4"
		% CONDUIT FILL	8%	12%	4%	1%	3%	3%
12 COND. CABLE (VEH.) *	(A)	2,4,2P	1	1				
	(B)							
	(C)	4	1	1	1			
	(D)	1,2,2P	1	1	1	1		
	(E)	1,6	1				1	1
	(F)	6	1					1
TOTAL			5	3	2	1	1	2
3 COND. CABLE (PPB) *	(B)		1	1				
	(C)		1	1	1			
TOTAL			2	2	1			
TYPE C DETECTOR LEAD-IN CABLE	Ø1							
	Ø2							
	Ø4							
	Ø6							
	TOTAL							
# 8	LUMINAIRES		4	2	2		2	2
# 12	PEU		3	3				
# 8	SIGNAL NEUTRAL		2	1	1	1	1	1
EVP CABLE #20	EVA		1	1				
	EVB		1	1	1			
	EVC		1				1	1
	TOTAL		3	2	1		1	1

\* NUMBER INDICATIONS ARE THE NUMBER OF CABLES WITHIN CONDUIT.

**GENERAL NOTES (CONT'D)**

- CONTRACTOR SHALL VERIFY LOCATION AND DEPTH OF EXISTING CALTRANS DETECTORS, CONDUITS, PULL BOXES AND OTHER ELECTRICAL FACILITIES BEFORE USING TOOLS OR EQUIPMENT THAT MAY DAMAGE THOSE FACILITIES OR INTERFERE WITH AN ELECTRICAL SYSTEM.
- CONTRACTOR SHALL NOTIFY THE CALTRANS ENGINEER PRIOR TO PERFORMING ANY WORK THAT WILL AFFECT THE EXISTING TRAFFIC SIGNAL OPERATION. AN ADVANCE NOTICE OF AT LEAST 3 WORKING DAYS IS REQUIRED.
- ALL LOOPS SHALL BE INSTALLED AND TESTED PRIOR TO LIFT FINAL OF NEW PAVEMENT.
- START THE OPERATIONAL TEST OF THE SYSTEM ON ANY DAY EXCEPT MONDAY, FRIDAY OR THE DAY BEFORE A HOLIDAY. NOTIFY THE ENGINEER TWO WEEKS BEFORE STARTING THE TEST.
- IF ADDING NEW CONDUCTORS OR REMOVING EXISTING CONDUCTORS, REMOVE ALL CONDUCTORS, CLEAN THE CONDUIT UNDER SECTION 87-1.03A, AND PULL ALL CONDUCTORS IN THE CONDUIT AS 1 UNIT. EXISTING UNDERGROUND CONDUIT TO BE INCORPORATED INTO A NEW SYSTEM MUST BE CLEANED WITH A MANDREL OR CYLINDRICAL WIRE BRUSH AND BLOWN OUT WITH COMPRESSED AIR.
- LOCATIONS OF CONTROLLER, CONDUIT, PULL BOXES AND OTHER EQUIPMENT SHOWN ON THESE PLANS ARE APPROXIMATE AND MAY BE CHANGED TO SUIT FIELD CONDITIONS OR AS DIRECTED BY THE ENGINEER.
- ALL UTILITIES SHOWN ON THESE PLANS AREA APPROXIMATELY ONLY. THE CONTRACTOR SHALL VERIFY OVERHEAD AND UNDERGROUND CLEARANCE WITH ALL AFFECTED UTILITIES PRIOR TO THE START OF WORK.
- PLACE STOP BAR LOOPS (TYPE D) ONE FOOT FROM LIMIT LINE WITH 10' SPACING BETWEEN LOOPS.
- INDUCTIVE LOOP CONDUCTORS MUST BE TYPE 2,
- LOOP DETECTOR LEAD-IN CABLES (DLC) MUST BE TYPE B.
- SLOTS MUST BE FILLED WITH HOT-MELT RUBBERIZED ASPHALT SEALANT.
- THE DEPTH OF LOOP SEALANT ABOVE THE TOP OF THE UPPERMOST LOOP CONDUCTOR IN THE SAWED SLOTS MUST BE 2 INCHES, MINIMUM.
- USE METHOD B TO INSULATE A SPLICE.
- ALL CONDUIT IN A FOUNDATION SHALL BE TYPE 1.
- INSTALL ALL SIGNAL POLES WITH APS WITHIN 5FT. OF CROSSWALK.
- INSTALL LED COUNTDOWN PEDESTRIAN SIGNAL MODULES.
- ALL NEW SIGNAL HEADS SHALL BE 12" INDICATIONS WITH BACK PLATES AND TUNNEL VISORS.
- TO BE SUPPLEMENTED BY THE 2018 CALTRANS STANDARD PLANS, STANDARD SPECIFICATIONS AND ALL UPDATES.

**POLE AND EQUIPMENT SCHEDULE**

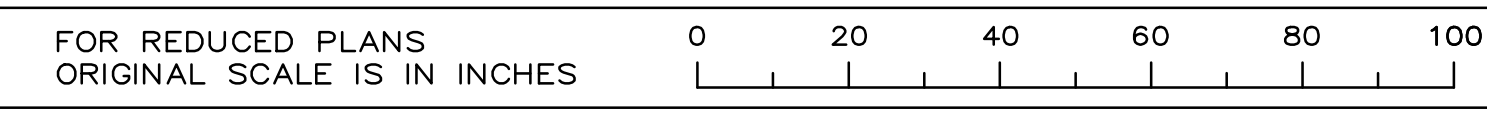
No.	STANDARD			VEH SIG MTG	PED SIGNAL	APS	LED LUMINAIRE	SPECIAL REQUIREMENTS			
	Type	Sig. M.A.	Lum.M.A.	Mast Arm	Pole	Ø	MTG		Ø	ARROW	
(A)	61-5-100	60'	15'	MAS MAS MAS	SV-2-TB	2	SP-1-T	-	-	165W	FURNISH AND INSTALL R3-18 SIGN, VIDEO DETECTION CAMERA AND EVP CHANNEL "A" ON SMA.
(B)	PPB POST (E)	-	-	-	-	-	-	2	RIGHT	-	
(C)	19-4-100	25'	15'	MAS	SV-1-T	-	-	2	LEFT	165W	FURNISH AND INSTALL VIDEO DETECTION CAMERA AND EVP CHANNEL "B" ON SMA.
(D)	1-A	-	-	-	TV-2-T	2	SP-1-T	-	-	-	
(E)	29-5-100	40'	15'	MAS MAS MAS	SV-2-TB	-	-	-	-	165W	FURNISH AND INSTALL R73-3 SIGN , R3-1 SIGN, VIDEO DETECTION CAMERA AND EVP CHANNEL "C" ON SMA. FURNISH AND MOUNT R9-3, R14-1 AND M4-6 SIGNS ON SIGNAL POLE.
(F)	1-A	-	-	-	TV-1-T	-	-	-	-	-	FURNISH AND MOUNT R3-1 SIGN ON SIGNAL POLE.

ALL EQUIPMENT IS NEW UNLESS NOTED OTHERWISE  
(E) = EXISTING EQUIPMENT

**SIGNAL AND LIGHTING  
(CONDUCTOR, EQUIPMENT  
AND POLE SCHEDULES)**

SCALE NONE

E-2



FOR REDUCED PLANS ORIGINAL SCALE IS IN INCHES  
USERNAME => USER  
DGN FILE => FILE

CU

EA

DATE PLOTTED =>  
TIME PLOTTED =>  
LAST REVISION  
JUNE 2021



# ATTACHMENT E

STATE OF CALIFORNIA

DEPARTMENT OF RESOURCES RECYCLING AND RECOVERY (CalRecycle)

## **RELIABLE CONTRACTOR DECLARATION**

CalRecycle 168 (Revised 9/16)

This form must be completed and submitted to the Department of Resources Recycling and Recovery (CalRecycle) prior to authorizing a contractor(s) to commence work. Failure to provide this documentation in a timely manner may result in nonpayment of funds to the contractor(s).

This form is intended to help the CalRecycle's Grantees comply with the Reliable Contractor Declaration (formerly Unreliable List) requirement of their Terms and Conditions.

The Reliable Contractor Declaration (formerly Unreliable List) provision requires the following: Prior to authorizing a contractor(s) to commence work under the Grant, the Grantee shall submit to CalRecycle a declaration signed under penalty of perjury by the contractor(s) stating that within the preceding three (3) years, none of the events listed in Section 17050 of Title 14, California Code of Regulations, Natural Resources, Division 7, has occurred with respect to the contractor(s). Please see the reverse of this page, or refer to the [California Code of Regulations](http://www.calregs.com) (www.calregs.com).

If any of the events listed in Section 17050 have occurred, disclosure is required but will not necessarily result in CalRecycle refusing to approve the contractor. A signed statement explaining the facts and circumstances of the events must be attached to and submitted with this form.

**Contractor:** Complete the form and send original to the Grantee.

**Grantee:** Scan the form and upload it to the grant in CalRecycle's Grant Management System. For further instruction about logging into the Grant Management System and uploading this form, reference the Procedures and Requirements. Retain the original form in your grant file.

GRANTEE INFORMATION	
GRANTEE NAME:	GRANT NUMBER:
PRIMARY CONTACT NAME:	
CONTRACTOR INFORMATION	
CONTRACTOR NAME:	
AUTHORIZED CONTRACTOR REPRESENTATIVE NAME:	
MAILING ADDRESS:	
As the authorized representative of the above identified contractor, I declare under penalty of perjury under the laws of the State of California that within the preceding three (3) years, none of the events listed in Section 17050 of Title 14, California Code of Regulations, Natural Resources, Division 7, has occurred with respect to the above identified contractor.	
<b>Alternatively</b> , as the authorized representative of the above identified contractor, I declare under penalty of perjury under the laws of the State of California that within the preceding three (3) years, if any of the events listed in Section 17050 of Title 14, California Code of Regulations, Natural Resources, Division 7, has occurred with respect to the above identified contractor, I have disclosed all such occurrences in an attached signed statement that explains the facts and circumstances of the listed events.	
Signature	Date



**RELIABLE CONTRACTOR DECLARATION**

CalRecycle 168 (Revised 9/16)

**Title 14 CCR, Division 7, Chapter 1****Article 5. Unreliable Contractors, Subcontractors, Borrowers and Grantees****Section 17050. Grounds for Placement on Unreliable List**

The following are grounds for a finding that a contractor, any subcontractor that provides services for a CalRecycle agreement, grantee or borrower is unreliable and should be placed on the CalRecycle Unreliable Contractor, Subcontractor, Grantee or Borrower List ("[Unreliable List](#)"). The presence of one of these grounds shall not automatically result in placement on the Unreliable List. A finding must be made by the Executive Director in accordance with section 17054, and there must be a final decision on any appeal that may be filed in accordance with section 17055 et seq.

- (a) Disallowance of any and/or all claim(s) to CalRecycle due to fraudulent claims or reporting; or
- (b) The filing of a civil action by the Attorney General for a violation of the False Claims Act, Government Code section 12650 et. seq; or
- (c) Default on a CalRecycle loan, as evidenced by written notice from CalRecycle staff provided to the borrower of the default; or
- (d) Foreclosure upon real property loan collateral or repossession of personal property loan collateral by CalRecycle; or
- (e) Filing voluntary or involuntary bankruptcy, where there is a finding based on substantial evidence, that the bankruptcy interfered with the CalRecycle contract, subcontract, grant or loan; or
- (f) Breach of the terms and conditions of a previous CalRecycle contract, any subcontract for a CalRecycle agreement, grant, or loan, resulting in termination of the CalRecycle contract, subcontract, grant or loan by the CalRecycle or prime contractor; or
- (g) Placement on the CalRecycle's chronic violator inventory established pursuant to Public Resources Code section 44104 for any owner or operator of a solid waste facility; or
- (h) The person, or any partner, member, officer, director, responsible managing officer, or responsible managing employee of an entity has been convicted by a court of competent jurisdiction of any charge of fraud, bribery, collusion, conspiracy, or any act in violation of any state or federal antitrust law in connection with the bidding upon, award of, or performance under any CalRecycle contract, subcontract, grant or loan; or
- (i) The person or entity is on the list of unreliable persons or entities, or similar list, of any other federal or California state agency; or
- (j) The person or entity has violated an Order issued in accordance with section 18304; or,
- (k) The person or entity has directed or transported to, has or accepted waste tires at, a site where the operator is required to have but does not have a waste tire facility permit; or,
- (l) The person or entity has transported waste tires without a waste tire hauler registration; or,
- (m) The person or entity has had a solid waste facility or waste tire permit or a waste tire hauler registration denied, suspended or revoked; or,
- (n) The person or entity has abandoned a site or taken a similar action which resulted in corrective action or the expenditure of funds by CalRecycle to remediate, clean, or abate a nuisance at the site; or
- (o) The following are additional grounds for a finding that, a person or entity described below should be placed on the Unreliable List:
  - (1) The person or entity owned 20% or more of an entity on the Unreliable List at the time of the activity that resulted in its placement on the Unreliable List;
  - (2) The person held the position of officer director, manager, partner, trustee, or any other management position with significant control (Principal Manager) in an entity on the Unreliable List at the time of the activity that resulted in its placement on the Unreliable List;
  - (3) The entity includes a Principal Manager who:
    1. Was a Principal Manager in an entity on the Unreliable List at the time of the activity that resulted in its placement on the Unreliable List; or,
    2. Owned 20% or more of an entity on the Unreliable List at the time of the activity that resulted in its placement on the Unreliable List;
  - (4) The entity has a person who owns 20% or more of the entity, if that person:
    1. Was a Principal Manager in an entity on the Unreliable List at the time of the activity that resulted in its placement on the Unreliable List; or,
    2. Owned 20% or more of an entity on the Unreliable List at the time of the activity that resulted in its placement on the Unreliable List.
  - (5) The entity has another entity which owns 20% or more of the entity, if that other entity:
    1. Is on the Unreliable List; or,
    2. Owned 20% or more of an entity on the Unreliable List at the time of the activity that resulted in its placement on the Unreliable List.
  - (6) Subsection (o) is not intended to apply to a person or entity that purchases or otherwise obtains an entity on the Unreliable List subsequent to its placement on the Unreliable List.