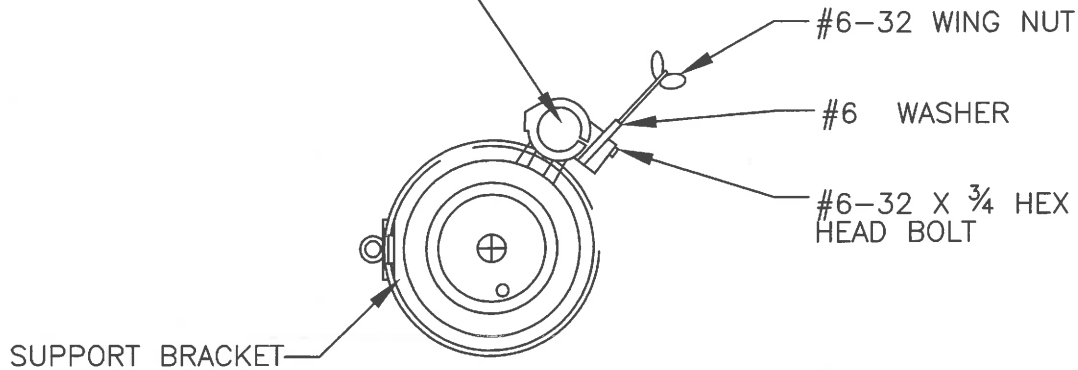
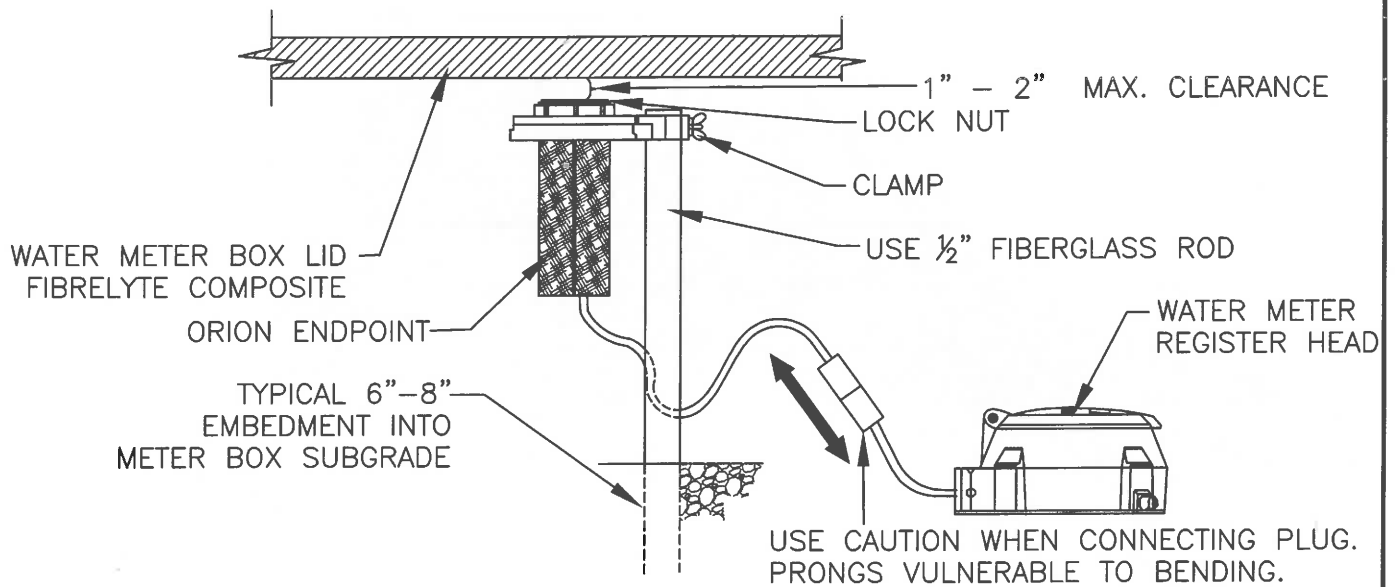


USE 1/2" X 18" FIBERGLASS ROD



PIT SUPPORT BRACKET (KNUCKLES) - TOP VIEW



PIT ORION BENEATH LID INSTALLATION - SIDE VIEW

Installation of ORION ENDPOINT below a meter pit lid.

1. Drive rod into the ground prior to attaching the endpoint to avoid damage.
2. Once in the ground, secure the mounting bracket on the rod using the enclosed washer, wing nut and hex head bolt provided with bracket.
3. Insert the endpoint through the bottom of the bracket and thread the lock nut onto the top of the endpoint. Mount the endpoint a maximum of one to two inches below the underside of the lid.

NOT TO SCALE

Approved by:

[Signature]

City Of Lathrop
Public Works Director

No	Revised	Date

CITY OF LATHROP
DEPARTMENT OF PUBLIC WORKS

**REMOTE READ
END-POINT-TRANSMITTER
INSTALLATION**



**STANDARD
DETAIL**

Date: **FEBRUARY 2022**

Drawing No:

W-8