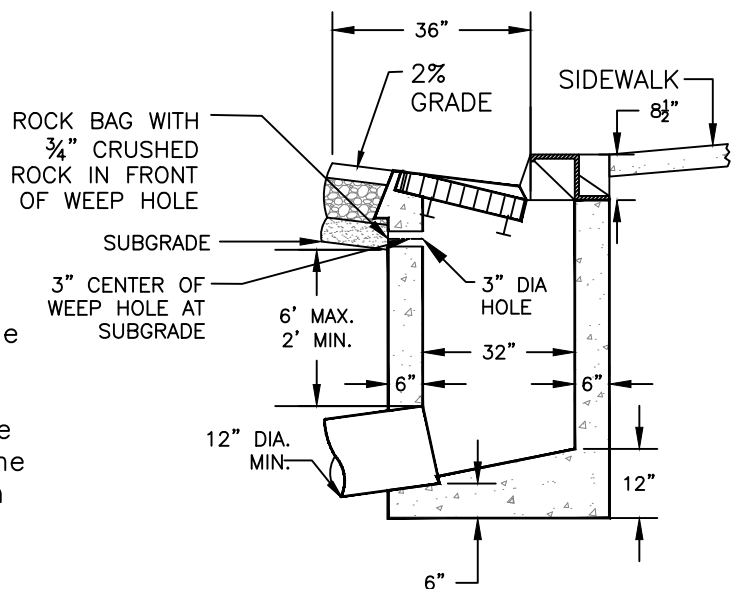


NOTES:

1. Use D&L product FA-8557 for hood, frame, and grate or approved equal.
2. Precast concrete catch basin may be used subject to written approval of the City Engineer.
3. Catch basin walls may be cast to an elevation no more than 2 ft below the top of curb. The contractor shall frame and pour the upper 2 ft of the catch basin monolithically with the curb and gutter.
4. All exposed steel shall be hot-dip galvanized.
5. Where sidewalk is not present, provide a concrete apron.
6. Bolt down frame to grate or Heat-treated 1/4" chain, minimum 18" long, shall be welded from the frame to the end of the grate.



NOT TO SCALE

Approved by:

*[Signature]*  
City Of Lathrop  
City Engineer

**CITY OF LATHROP**  
DEPARTMENT OF PUBLIC WORKS

**CURB INLET TYPE II**



**STANDARD  
DETAIL**

Date: **JULY 2025**

Drawing No:

**D-3**

No	Revised	Date