

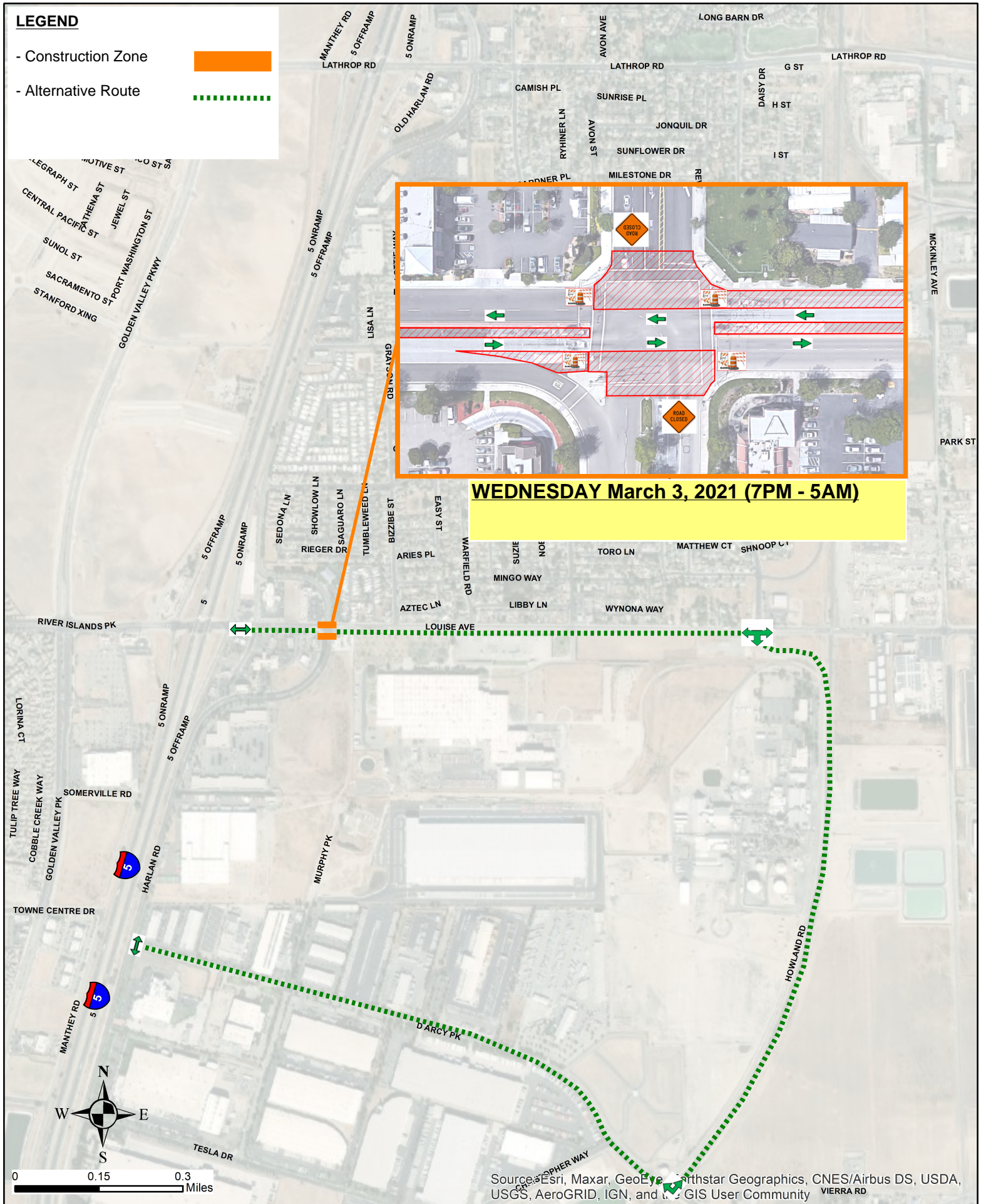


LEGEND

- Construction Zone 
- Alternative Route 



WEDNESDAY March 3, 2021 (7PM - 5AM)

Source: Esri, Maxar, GeoEye, Earthstar Geographics, CNES/Airbus DS, USDA, USGS, AeroGRID, IGN, and the GIS User Community



PARTIALLY INTERSECTION CLOSURE AT LOUISE AVE AND HARLAN RD

Disclaimer: Data shown may not be accurate and is for mapping purposes only. Contact the City for more information.